



<p>If you require translation services or a copy of this document in other languages, audio tape, Braille or larger print, please speak to a member of CWP staff, e-mail info@cwps.nhs.uk or write to: Communications and Engagement, Cheshire and Wirral Partnership NHS Foundation Trust, Redesmere, Countess of Chester Health Park, Liverpool Road, Chester, CH2 1BQ.</p>
<p>যদি আপনার ট্রান্সলেশন সার্ভিসের বা এই দলিলের কপি অন্য ভাষায়, অডিও টেইপে, ব্রেইল বা বড় ছাপায় দরকার হয় তবে অনুগ্রহ করে সিউব্লিউপি এর স্টাফদের সাথে কথা বলুন, ইমেইল করার ঠিকানা info@cwps.nhs.uk বা কমিউনিকেশন, চেশায়ার ও উইরাল পার্টনারশীপ এনএইচএস ফাউন্ডেশন ট্রাস্ট, আপটন লী, কাউন্টস অফ চেশটার হেলথ পার্ক, লিভারপুল রোড, চেশটার, সিএইচ২ ১ বিকিউ ঠিকানায় লিখুন।</p>
<p>如果您需要翻譯服務或想索取這份文件的其他語文、錄音帶、凸字或大字體版本，請向我們的職員查詢。您亦可以寄電郵至 info@cwps.nhs.uk 或寄信到 Communication, Cheshire and Wirral Partnership NHS Foundation Trust, Upton Lea, Countess of Chester Health Park, Liverpool Road, Chester, CH2 1BQ.</p>
<p>જો તમારે ભાષાંતર સેવાઓ અથવા આ દસ્તાવેજની બીજી ભાષાઓમાં નકલ, ઓડિયો ટેપ, બ્રેઇલ અથવા વિચિત્ર કદની છપાઈની જરૂર હોય, તો કૃપા કરીને સીડબ્લ્યુપી (CWP) ના કર્મચારીઓ સાથે વાત કરો, ઈમેલ કરો: info@cwps.nhs.uk અથવા આ સરનામે લખો: Communication, Cheshire and Wirral Partnership NHS Foundation Trust, Upton Lea, Countess of Chester Health Park, Liverpool Road, Chester, CH2 1BQ.</p>
<p>यदि आपको अनुवाद सेवाएं या इस दस्तावेज की अन्य भाषाओं में नकल, ऑडियो टेप, ब्रेइल लीपि या विशाल आकार में छपाई की आवश्यकता हो, तब कृपया सीडब्ल्यूपी (CWP) कर्मचारियों के साथ बात कीजिये, या ईमेल कीजिये: info@cwps.nhs.uk या इस पते पर लिखिये: Communication, Cheshire and Wirral Partnership NHS Foundation Trust, Upton Lea, Countess of Chester Health Park, Liverpool Road, Chester, CH2 1BQ.</p>
<p>Jeśli wymagane jest tłumaczenie lub kopia niniejszego dokumentu w innych językach, na taśmie magnetofonowej, w języku Braille'a lub dużym drukiem, prosimy o skontaktowanie się z członkiem personelu CWP (Organizacja partnerska krajowego systemu zdrowia regionów Cheshire i Wirral) lub przez pocztę elektroniczną: info@cwps.nhs.uk lub na adres: Communications and Engagement, Cheshire and Wirral Partnership NHS Foundation Trust, Redesmere, Countess of Chester Health Park, Liverpool Road, Chester, CH2 1BQ.</p>
<p>Os oes arnoch angen gwasanaeth cyfiethu neu gopi o'r ddogfen hon mewn ieithoedd eraill, tâp sain, Braille neu brint mawr, siaradwch ag aelod o staff CWP, e-bost info@cwps.nhs.uk neu ysgrifennwch i: Communications and Engagement, Cheshire and Wirral Partnership NHS Foundation Trust, Redesmere, Countess of Chester Health Park, Liverpool Road, Chester, CH2 1BQ.</p>

Feedback

We welcome any suggestions you have, please send your **comments, concerns, complaints and compliments** to: **PALS, Complaints and Incidents Team**, Cheshire and Wirral Partnership NHS Foundation Trust, Redesmere, Countess of Chester Health Park, Liverpool Road, Chester, CH2 1BQ.

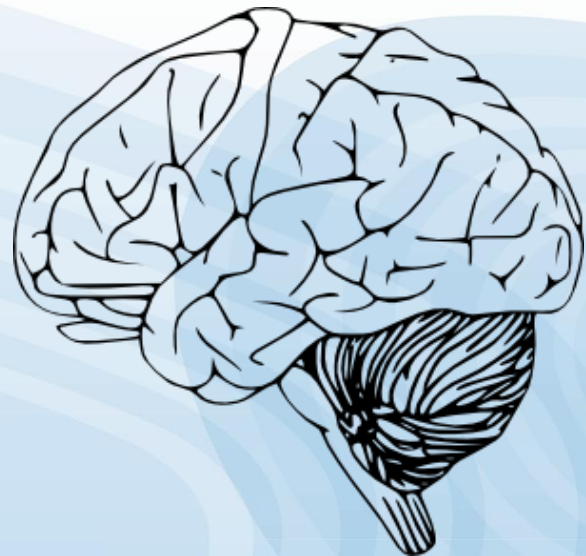
For more information see www.cwps.nhs.uk

© CWP NHS Foundation Trust

The information in the leaflet was valid at the date of production **Apr 2015** and is due for review in **Apr 2017**.

Leaflet code: **F-ABIS-12-526**

Acquired Brain Injury Service



Our Service

Our area-wide specialist service, which covers South Cheshire and Wirral, provides:

- In-patient neuropsychology assessment and treatment for stroke and neuro-rehabilitation wards at Clatterbridge Hospital.
- Community-based neuropsychology, vocational rehabilitation and case management across the South Cheshire and Wirral area.



Who we see

- Clients who have suffered an acquired brain injury (ABI) as an **ADULT** – over 18yrs old.
- Any ABI client with complex rehabilitation, psychological or social needs.
- Clients who have suffered a stroke
- Head injury
- Anoxic brain injury
- Subarachnoid haemorrhage
- Infection or toxic conditions affecting brain function
- Brain tumours (medically stable)

We provide:

Neuropsychology

- Behaviour management
- Anger management
- Anxiety management
- Cognitive problem management
- Capacity assessment
- Return to driving
- Family support
- Risk assessment
- Staff training

Vocational Rehabilitation

- Accessing community activities
- Benefits advice
- Voluntary work
- Activity pacing/fatigue management
- Liaising with HR/occupational health departments
- Job coaching /shadowing
- Return to work programmes
- Liaising with education services

Case Management

- Discharge planning
- Gate keeping out of area placements
- Arranging professionals meetings
- Family support
- Consultant/GP updates
- Joint working with Social Services re: support needs
- Co-ordinating community provider input
- Liaising with voluntary sector

Intervention

The service also provides both individual and group treatment. We currently run groups such as 'Parenting after a Brain Injury' and 'Fatigue Management'.

- The referrer will receive an initial screening and risk assessment report within 6 weeks of referral.
- Bespoke treatment programmes are designed for clients and a goal setting process used.
- Interim reports are sent to update health professionals
- Discharge reports are sent to GPs and relevant others
- Regular reports are sent to commissioners regarding out of area placements.

A service-user satisfaction survey is undertaken annually and the following outcome measures are used:

- Grafton Manor Hierarchy of Placement Scale
- Health of the Nation Outcome Scale – Acquired Brain Injury
- European Brain Injury Questionnaire
- Hospital Anxiety and Depression Scale
- Glasgow Outcome Scale - Extended
- Fatigue Assessment Scale

Location

Please send all referrals to:

**ABI Service,
Acorn Suite, 1829 Building,
Countess of Chester Health Park,
Liverpool Road, Chester CH2 1HJ
Telephone: 01244 389252 Fax: 01244 389255**

The community service is primarily domiciliary, but we often book rooms at GP practices and Healthy Living Centres when necessary.